



Sparkling Holiday

Christmas Quilt Instructions

Supply List

- 920406096 Embroidery collection #278 Sparkling Holiday
- 920115096 QUILTER'S HOOP 200x200 (8"x8")
- 412944501 DESIGNER™ Royal Hoop 360x200 (14 1/8"x8")
- 920215096 Yarn Couching feet set
- 620116996 Piping foot
- 412927446 Clear Stitch-in-Ditch Foot
- 620071796 Embroidery needles
- Assorted embroidery thread
- Assorted yarn
- 1 piece of white fabric 47 1/4"x11 7/8" (120x30cm)
- 1 piece of white fabric 47 1/4"x43 3/4" (120x110cm)
- 1 piece of green fabric 47 1/4"x11 7/8" (120x30cm)
- 1 piece of red fabric 47 1/4"x11 7/8" (120x30cm)
- 1 piece of batting 41 3/8"x57 7/8" (105x147cm)
- 1 piece of green fabric for the backing 41 3/8"x57 7/8" (105x147cm)

1. Embroider design #25 four times on the white fabric, 47 1/4"x11 7/8" (120x30cm). When embroidery is finished, trim the fabric to size 41 3/8"x7 1/2" (105x19cm).
2. Embroider the Christmas tree on the white fabric. 47 1/4"x43 3/4" (120x110cm) Mark the middle of the fabric as a guideline, and start with design #21. Follow the illustrations. When embroidery is finished, trim the fabric to size 41 3/8"x40 1/4" (105x102cm).
3. Embroider Combined stars three times on the green fabric. 47 3/4"x11 7/8" (120x30cm) When embroidery is finished, trim the fabric to size 41 3/8"x4" (105x10cm).
4. Embroider Combined border four times + design #9 as ending on the red fabric. 47 1/4"x11 7/8" (120x30cm) When embroidery is finished, trim the fabric to size 41 3/8"x8 3/4" (105x22cm).



1cm seam allowance included.

Sew the parts together.

We used the piping foot on the green fabric with the stars.

Sew a sleeve to the top, on the right side of the backing fabric, for inserting a rod to hang your wallhanging.

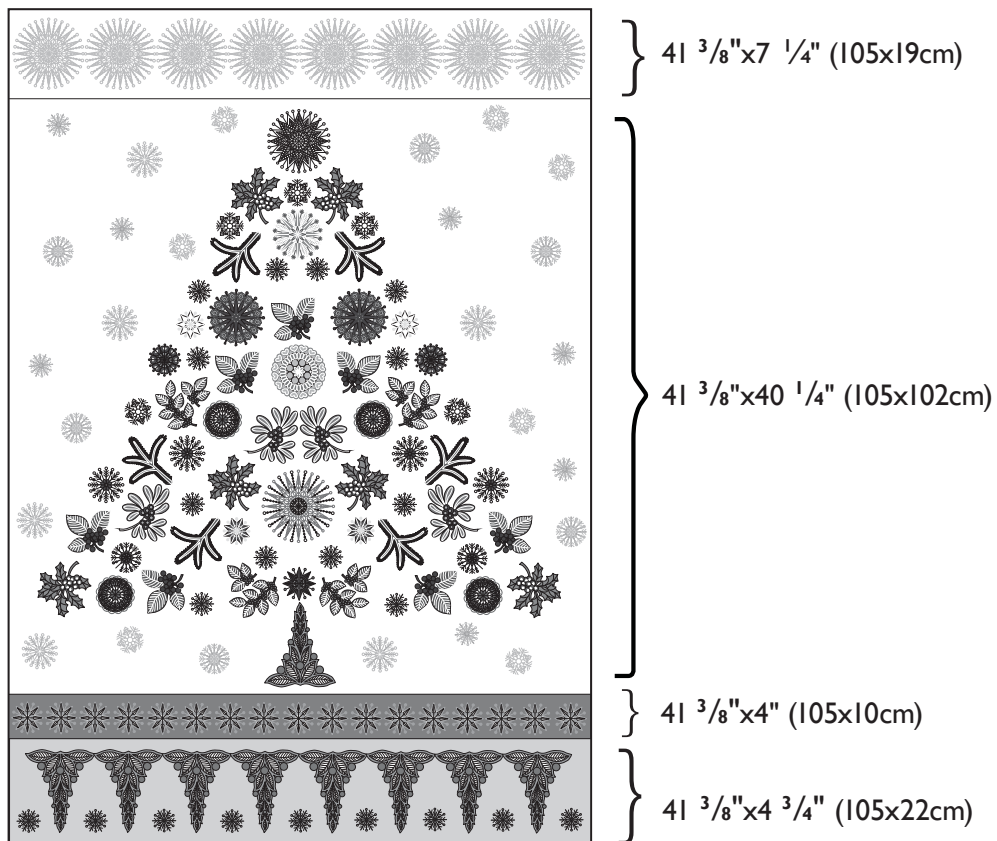
Sew the front and the backside fabric+ batting right sides together. Leave an opening in the bottom. Turn the right side out and press. Sew the opening closed.

Quilt the layers together with a few stitches in the middle of each round design in the Christmas tree, stitch in the ditch between the different fabrics and embroider some snowflakes around the Christmas tree.

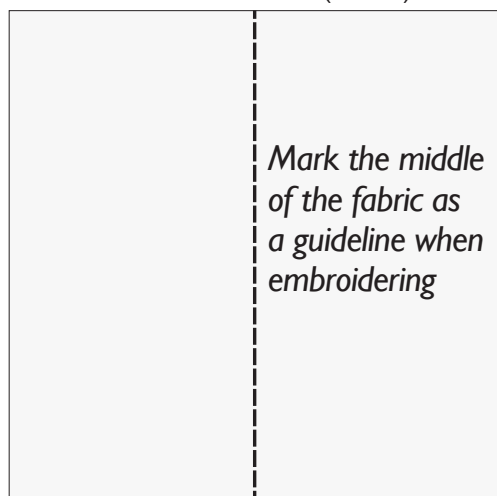
Embellish your Christmas tree with pearls and crystals.

Good luck and ENJOY!

When the embroidery is finished, trim the fabric into the sizes indicated.

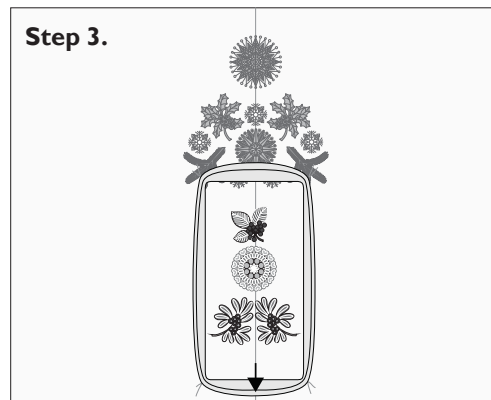


43 ³/₄" (110cm)



47 ¹/₂" (120cm)

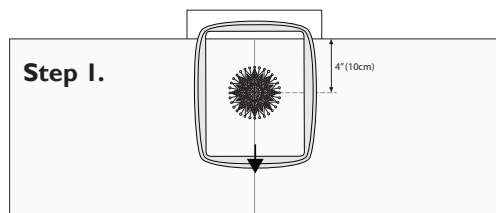
Step 3.



Combined # 2

DESIGNER™ Royal Hoop 360x200mm (14 ¹/₈"x8")

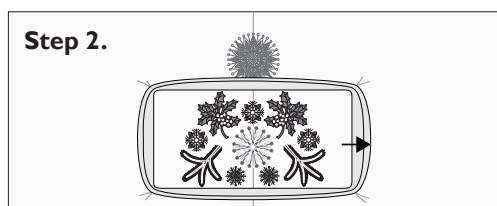
Step 1.



Design # 21

Quilters Hoop 200x200mm (8x8)

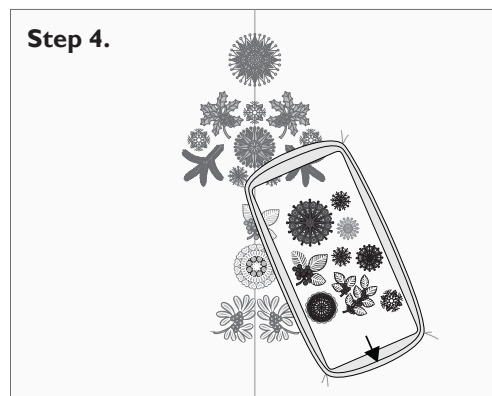
Step 2.



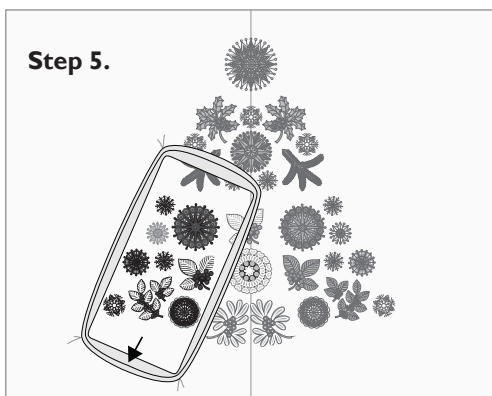
Combined # 1

DESIGNER™ Royal Hoop 360x200mm (14 ¹/₈"x8")

Step 4.

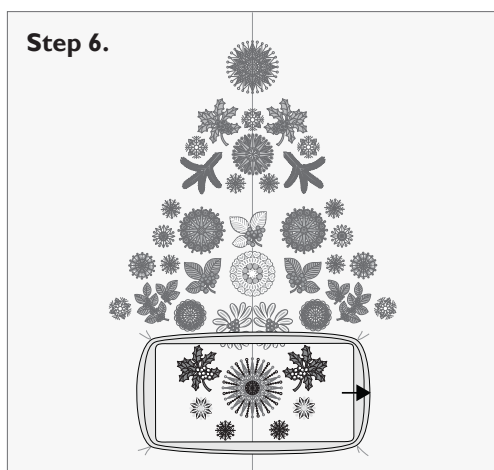


Combined # 3



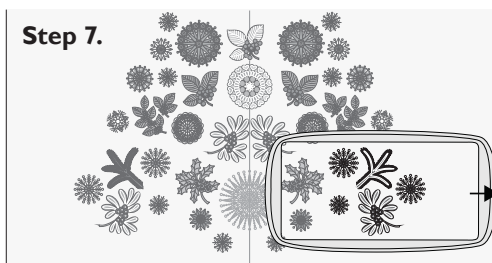
Combined #3
mirrored ◀

DESIGNER™ Royal Hoop 360x200mm (14 1/8"x8")



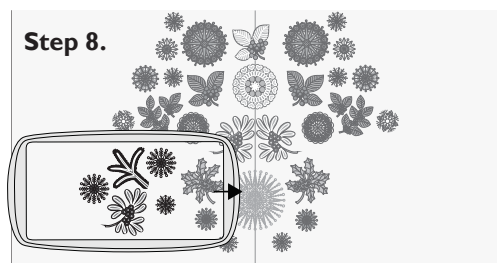
Combined #4

DESIGNER™ Royal Hoop 360x200mm (14 1/8"x8")



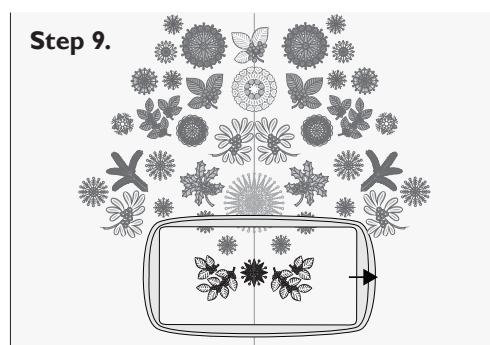
Combined #5

DESIGNER™ Royal Hoop 360x200mm (14 1/8"x8")



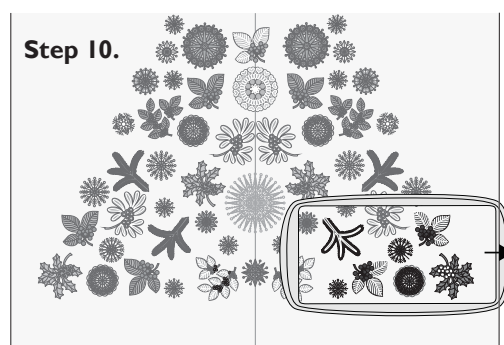
Combined #5
mirrored ▶

DESIGNER™ Royal Hoop 360x200mm (14 1/8"x8")



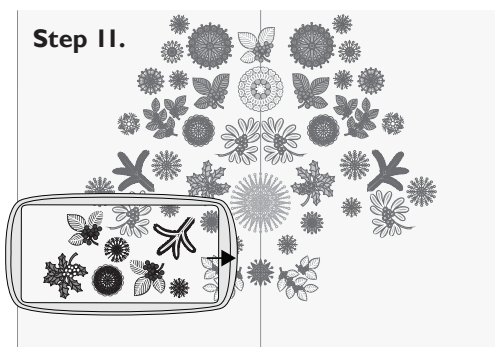
Combined #6

DESIGNER™ Royal Hoop 360x200mm (14 1/8"x8")



Combined #7

DESIGNER™ Royal Hoop 360x200mm (14 1/8"x8")



Combined #7
mirrored ▶

DESIGNER™ Royal Hoop 360x200mm (14 1/8"x8")



Design # 23

***You can find the combined files for the Christmas tree on the cd.
Information for each design of the combined file can be found in this booklet.***